

JOAN B MIRVISS LTD

FOR IMMEDIATE RELEASE

TSUBO: THE ART OF THE VESSEL

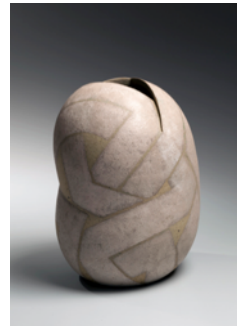
MARCH 13 – APRIL 24, 2014

JOAN B MIRVISS LTD 39 EAST 78TH STREET NYC

With its unparalleled and unbroken history in ceramics, Japan continues to lead the world in the important field of contemporary clay art. In tribute to this accomplishment, Joan B. Mirviss is proud to present an important exhibition, *Tsubo: The Art of the Vessel*, organized in collaboration with the leading modern ceramic dealer in Japan, Shibuya Kuradatoen Co., LTD and timed to open for the start of 2015 Asia Week New York. This seminal exhibition focuses on the classical concept of the *tsubo*, literally, the storage jar, chronicling its uninterrupted history from ancient to modern times, and examining its role in shaping the greater ceramic narrative of Japan and clay art the world over.

The way in which the Japanese have approached and appreciated the *tsubo* through history has been rather unique and special. Japanese poets, critics, collectors and scholars have referred to *tsubo* as works to be fondled and stroked, often identifying themselves with these seductive vessels to the point of losing themselves to their inner world. Descriptions of these vessels are pervasive throughout Japanese literature and history and contain now well-known poetic allusions. Admired through the centuries, these works have become widely treasured and acquired by collectors and museums both in Japan and abroad.

With works extending from Neolithic times, into 15th and 16th century medieval storage jars and through the 20th century, this exhibition will include over forty important clay vessels. Both glazed and unglazed, mineral-rich stoneware *tsubo* from many of the ancient kiln sites will be presented— Bizen, Karatsu, Seto, Shigaraki, and Tamba. Porcelain vessels with delicate celadon, oil-spot, and blue-and-white, glazes and those formed with marbled clay will provide insights into the important role that Chinese ceramics played in developments in Japan. Beyond the ancient and antique vessels, highlights will include daring forms by past master artists **Kamoda** Shôji (1933-83), **Kawai** Kanjirô (1890-1966), **Kondô** Yûzô (1902-85), **Matsui** Kôsei (1927-2003), **Okabe** Mineo (1919-90), and **Yagi** Kazuo (1918-79) in addition to modern interpretations by current leading ceramic stars **Kakurezaki** Ryûichi (b. 1950), **Mihara** Ken (b. 1958), **Mori** Tôgaku (b. 1937) and **Tsujimura** Shirô (b. 1947).



JAPANESE ART *Antique – Contemporary*

39 East 78th Street, 4th floor | New York NY 10075

Telephone 212 799 4021 | www.mirviss.com

JOAN B MIRVISS LTD

THE ORGANIZERS

Joan B. Mirviss is the leading western dealer in the field of modern and contemporary Japanese ceramics, and from her NY gallery on Madison Ave., Joan B. Mirviss LTD exclusively represents the top Japanese clay artists. As a widely published and highly respected specialist in her field for over thirty-five years, Mirviss has advised and built collections for many museums, major private collectors, and corporations.

Founded in 1969, Shibuya Kuradatoen Co., LTD has been the leading gallery for prominent exhibitions of master ceramists as well as a platform for launching new talents. Its major solo shows have ranged from the works of Rosanjin, Okabe, and Kamoda, to group exhibitions of the masters of the Showa era.

Joan B. Mirviss LTD is located at 39 East 78th Street in New York and is open Monday through Friday 11am-6pm and by appointment.

For further information and to request high-resolution images, please contact: Cris Smith at 212 799-4021 or by email at director@mirviss.com .