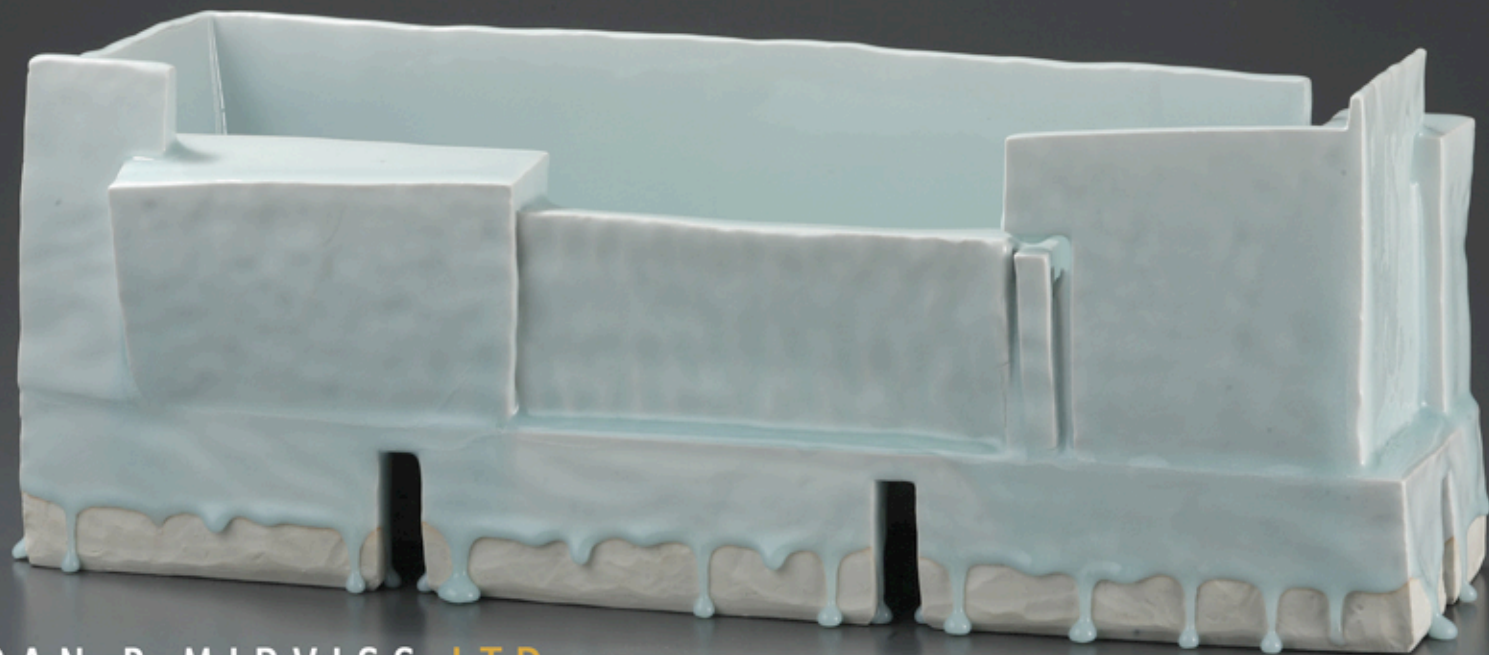


# YOSHIKAWA MASAMICHI

*Structured Elegance*



JOAN B MIRVISS LTD

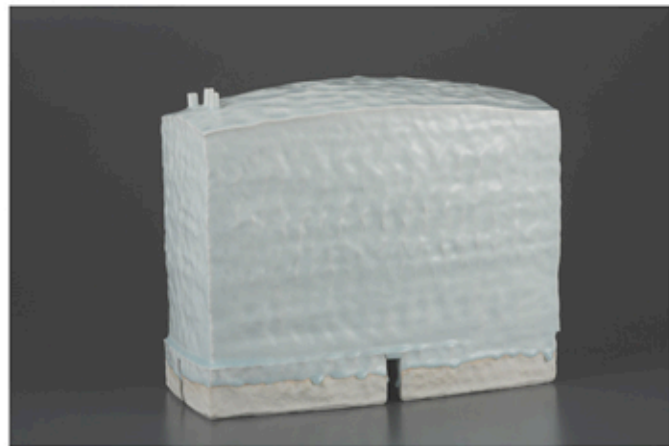


LEFT *Kayoh* 28 1/8 x 7 5/8 x 7 7/8"

RIGHT *Kayoh* 27 3/8 x 7 7/8 x 7 7/8"



*Kayoh* 8 1/4 x 11 3/8 x 11 3/8"



*Kayoh* 15 x 18 1/2 x 7 5/8"

Based in Tokoname, a region rich in ceramic history, the internationally celebrated artist **Yoshikawa Masamichi** (b. 1946) draws inspiration from ancient Chinese ceramic forms and glazes. Working in porcelain, he creates strikingly modern reinterpretations of these structures and covers them in dripping *seihakuji* (blue-white) glaze. His functional material is artfully painted with fanciful abstract designs in *sometsuke* (cobalt blue underglaze).



Tea pots, tea cup, footed plaque, *tokkuri* and *guinomi*

COVER Kayoh 9 5/8 x 25 1/4 x 8 1/4"

Photography by Murai Shigeru

All works created 2009

#### Selected Awards:

- 1972 Grand Prize, International Ceramics Festival, Vallauris, France (Gold Medal in 2002)
- 1981 Grand Prize, Asahi Contemporary Ceramics Competition (Grand Prize in 1983)
- 1998 Gold Medal, Kunst-Messe München
- 2000 Grand Prize, Izushi Porcelain Triennale Competition, Hyogo, Japan
- 2004 Grand Prize, Taiwan International Ceramics Biennale
- 2006 The Aichi Prefecture Arts and Culture Prize

#### Selected Public Collections:

- American Craft Museum, New York, USA
- Ariana Ceramic Art Museum, Geneva, Switzerland
- Brooklyn Museum, New York, USA
- Grassi Museum, Leipzig, Germany
- Incheon World Ceramic Center, Incheon, Korea
- Ito Memorial Museum, Izu, Japan
- Japan Foundation, Tokyo, Japan
- Kestner Museum, Hanover, Germany
- Landes Holstein Museum, Germany
- Musée National de Ceramique Sèvres, France
- Museum of Arts and Design, New York, USA
- Neuwe Sabulon Museum, Munich, Germany
- Nyon Porcelain Museum, Switzerland
- Prague Crafts Museum, Prague, Czech Republic
- Porvoo City Art Museum, Finland
- Vallauris Ceramic Museum, France
- Victoria & Albert Museum, London, England
- Yingge Ceramics Museum, Taipei, Taiwan



## EXHIBITION

December 9, 2009 - February 12, 2010

Monday - Friday 11:00 - 5:00 pm

and by appointment

Opening Reception: December 9, 2009

6:00 - 8:00 pm

*Please note that the gallery will be closed*

*December 24, 2009 through January 3, 2010*

JOAN B MIRVISS LTD

JAPANESE ART By Appointment

39 East 78th Street, 4th floor | New York NY 10075

Telephone 212 799 4021 | Facsimile 212 721 5148

joan@mirviss.com | www.mirviss.com

