



reflections on nature  
ceramic sculptures by

*koike shoko*

JOAN B MIRVISS LTD



**KOIKE SHOKO (b. 1943)** has always looked to the sea as a source for her forms, surfaces, and overall aesthetic. Drawing from marine life and pooling currents of water, she creates highly original sculptures that undulate and oscillate with protruding horns and pleated waves. More recently, plant forms have taken root in her artistic vocabulary, leading to the creation of large, imposing cactus-like flowers and alluring white-petalled blossoms. Throwing the initial form on a wheel, Koike hand-applies layers of Shigaraki clay that are pinched, pulled, carved and inscribed with linear raked patterning, and then coated

with two layers of creamy white glaze. Often made with open mouths, her larger forms appear “ready to receive something” as if intended as flower or shell-shaped receptacles.

One of the first female graduates in the ceramics department of the prestigious Tokyo National University of Fine Arts & Music, Koike was awarded the Salon de Printemps prize for her graduation work. Pioneering in a field previously the exclusive domain of Japanese men, Koike was also one of the earliest women to become a self-supporting studio artist. While influenced by teachers at university and her mother Koike Chie, a prominent Japanese fashion designer, she departed from these earlier influences to formulate her own vision focused on forms found in nature. Koike is already a celebrated artist in the West and last year she was awarded the highly important Japan Ceramic Society Prize.

#### SELECTED COLLECTIONS

Cleveland Museum of Art  
 Contemporary Art Museum, Houston  
 Clark Center for Japanese Art and Culture, Hanford, CA  
 Hamilton Art Gallery, Victoria, Australia  
 Mary and Jackson Burke Foundation, NY  
 Metropolitan Museum of Art  
 Minneapolis Institute of Arts  
 Musée national de céramique, Sèvres  
 Museum of Arts and Design, NY  
 Museum of Fine Arts, Boston  
 Museum of Oriental Ceramics, Osaka  
 National Museum of Modern Art, Tokyo  
 Shigaraki Ceramic Cultural Park, Shiga

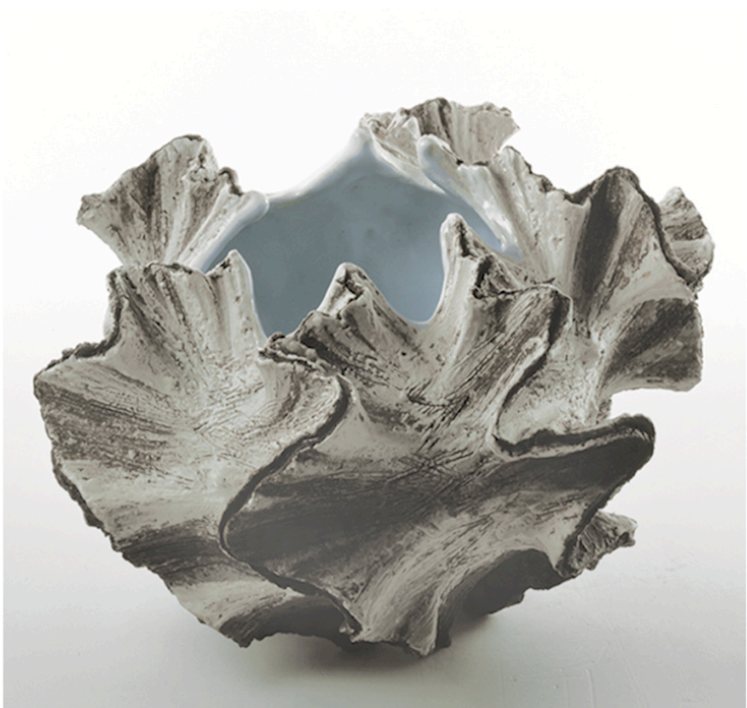


*White form, 2007*

8 1/4 x 16 7/8 x 15 3/4"



*White form*  
2008  
22 x 30 x 23 3/4"



*Shell*  
2009  
10 1/4 x 13 x 13"



at SOFA New York 2010

Park Avenue Armory

April 16-17 11-8 pm

April 19 11-7 pm

April 20 11-6 pm

at Joan B Mirviss LTD

April 21 - May 21

Monday-Friday 11-5 pm

**JOAN B MIRVISS LTD**

*JAPANESE ART By Appointment*

39 East 78th Street, 4th floor | New York NY 10075

Telephone 212 799 4021 | Facsimile 212 721 5148

joan@mirviss.com | www.mirviss.com