

Rising Star

# Quiet Tension:

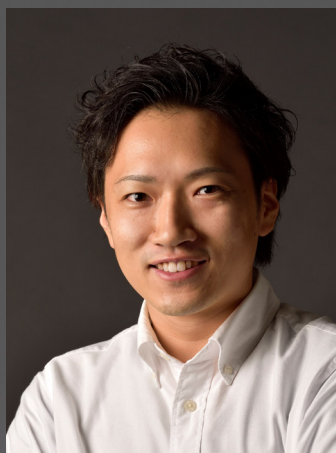
The Sculptural Art of Kino Satoshi

September 12- October 13

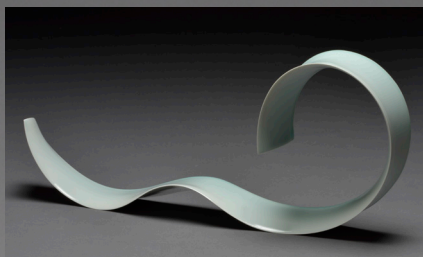


JOAN B MIRVISS LTD

The Kyoto artist KINO SATOSHI (b.1987) approaches the esteemed tradition of celadon-glazed porcelain by creating ribbon-like, attenuated sculptures covered with pale, bluish-white *seihakuji* glaze. Porcelain's seemingly contrasting features of delicacy and solidity have made it the ideal material for his wheel-thrown, remarkably thin, and curvilinear forms. Kino intends that his work both integrates with and confronts its surrounding space and at the same time evokes elements of nature, his principal source of inspiration.



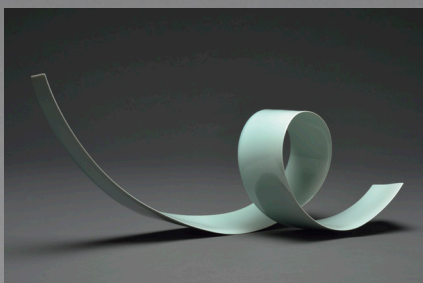
His artwork may be found in Asian museums including the Fuping International Ceramic Museum, China; Museum of Ceramic Art, Hyogo, Japan; New Taipei City Yingge Ceramic Museum, Taiwan; and recently have begun to be acquired by western museums.



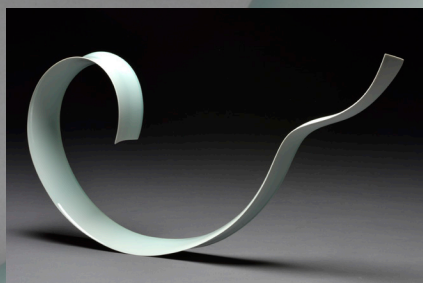
*Oroshi 17-7; Gust of Wind*  
Glazed porcelain 2017  
9 7/8 x 23 5/8 x 3 1/8 in.



*Oroshi 17-11; Gust of Wind*  
Glazed Porcelain 2017  
21 1/4 x 27 1/8 x 3 1/2 in.



*Oroshi 15-26k; Gust of Wind*  
Glazed porcelain 2015  
13 x 28 3/8 x 10 5/8 in.  
Cover artwork



*Oroshi 16-45; Gust of Wind*  
Glazed Porcelain 2016  
16 1/2 x 30 x 3 1/8 in.

JOAN B MIRVISS LTD

JAPANESE ART *Antique - Contemporary*

39 East 78th Street, 4th Floor | New York NY 10075

Telephone 212 799 4021 | [www.mirviss.com](http://www.mirviss.com)

Photography by INTERFOTO  
Designed by Victoria Anderson

© 2017 Joan B Mirviss LTD